



E-PRL CLOUD SERVICE

CONFIGURATION OF THE E-PRL SYSTEM with CLOUD SERVICE

Instruction manual

CE

INDEX

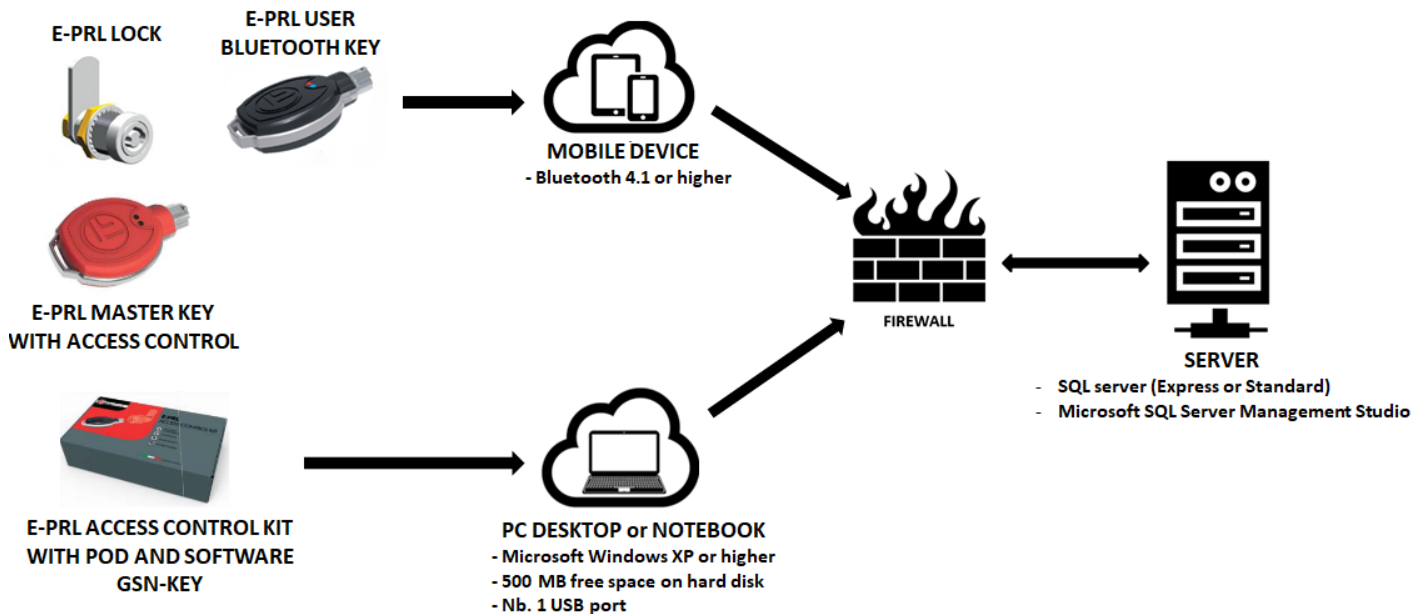
GSN-KEY AND CONFIGURATION WITH CLOUD SERVICE

➤ System layout	pag. 2
➤ System Configuration	pag. 2
➤ SQL Database creation in Cloud Server	pag. 2
➤ GSN-KEY installation on local PC	pag. 2
• Minimum PC requirements	pag. 3
• Installing drivers for POD recognition	pag. 3
• Installing GSN-KEY software	pag. 4
➤ Program installation for VPN connection on local PC	pag. 6
➤ File config modification	pag. 8
➤ Program launch, update and port setting	pag. 8
➤ Configuration and activation of mobile devices	pag. 9
➤ Change device	pag. 10
➤ Database Backup	pag. 10
➤ Declaration of Conformity	pag. 10

<u>Revisione Manuale</u>	<u>Data</u>	<u>Modifiche</u>
0	21.06.2019	First issue
1	02.07.2019	Added chapter "Database Backup"

GSN-KEY AND CONFIGURATION WITH CLOUD SERVICE

SYSTEM LAYOUT



SYSTEM CONFIGURATION

Below are the various steps for configuring the system for all customers who decide to use the Cloud Service provided by Giussani Techniques

1. PHASE 1 - SQL DATABASE CREATION IN CLOUD SERVER: BY GIUSSANI TECHNIQUES

- a) The customer will be sent a form to return against signed for the appointment as data manager and to start the database configuration procedures on the Cloud Server.
- b) After receiving the against signed form, Giussani Techniques will create the dedicated database and define all the configuration parameters and send the following data to the customer:
 - USERNAME for VPN (vedi punto 3.f)
 - PASSWORD for VPN (vedi punto 3.f)
 - USER ID and PASSWORD for SQL DATABASE
 - COMMUNICATION PORT OPEN FOR THE MOBILE DEVICE
 - NAME of DATABASE

2. PHASE 2 – GSN-KEY INSTALLATION ON A LOCAL PC: BY THE CUSTOMER

To use the GSN-KEY software and all its functions, we recommend installing the program on a local PC different from the one previously configured for communication with mobile devices. Perform the "Installing the software on a local PC" procedure on all the PCs (clients) that are to be enabled to use the GSN-KEY software with database sharing on the server.

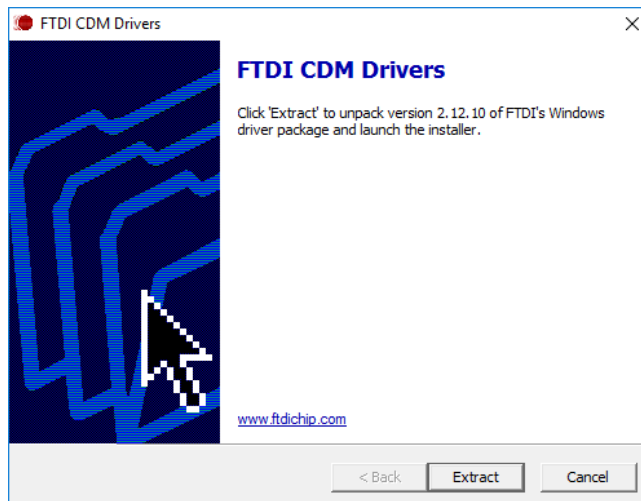
✓ MINIMUM PC REQUIREMENTS

- Microsoft Windows XP operating system or higher
- 500 MB free hard disk space
- N. 1 USB port

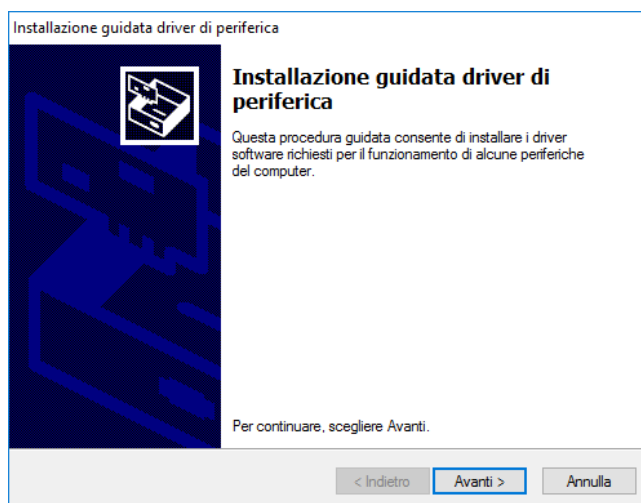
Copy the "Driver POD - FTDI CDM21210 Setup" and "GSN_KEY Installer IT" folders on the USB stick supplied with the kit into a local folder.

✓ INSTALLATION OF DRIVERS FOR POD RECOGNITION

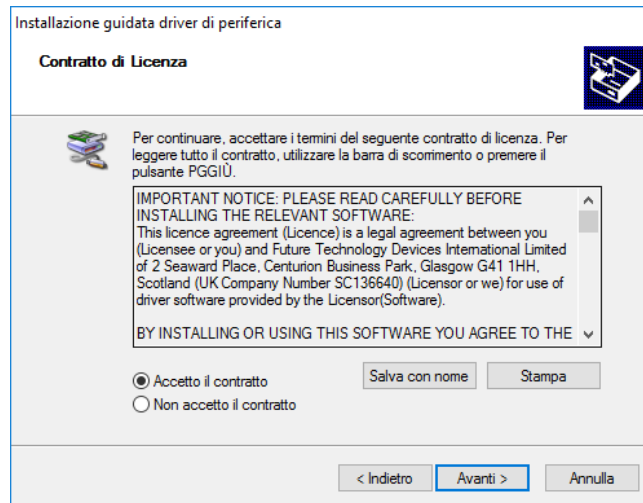
- The first step is to install the files required for POD recognition: launch the executable file (.exe) present in the "Driver Pod - FTDI CDM21210_Setup" folder and click on the EXTRACT button.



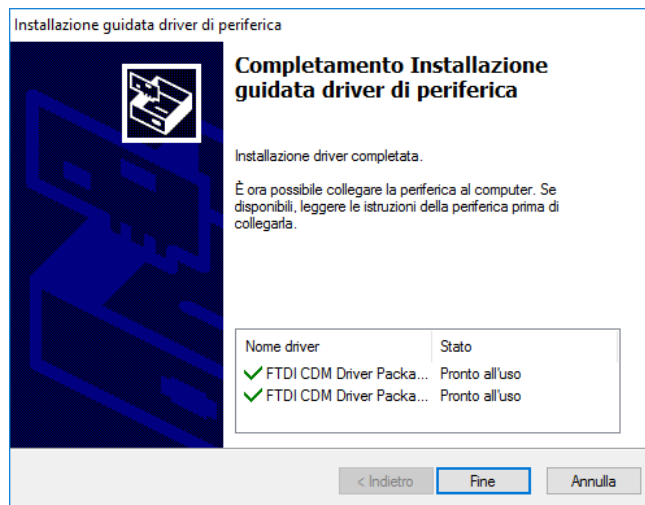
- Click NEXT



- Read carefully, then select "I accept the contract" and click on the button NEXT



- Wait for the installation to be completed, which will take a maximum of 1 minute, and click on the CLOSE button.



- The driver installation is complete. The POD can now be recognized by the GSN-KEY access control software

✓ GSN-KEY SOFTWARE INSTALLATION

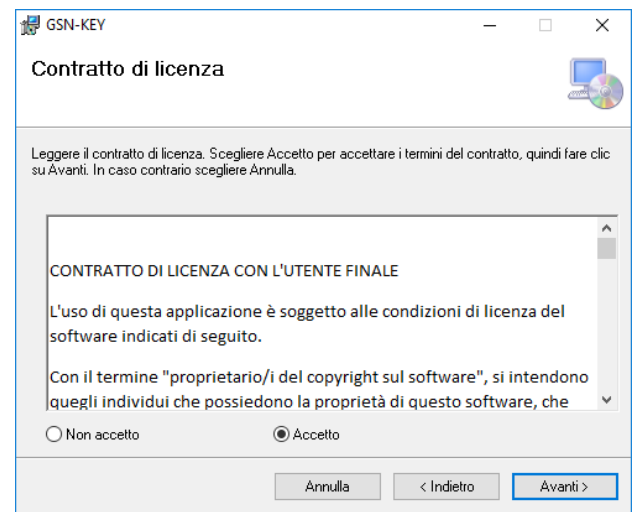
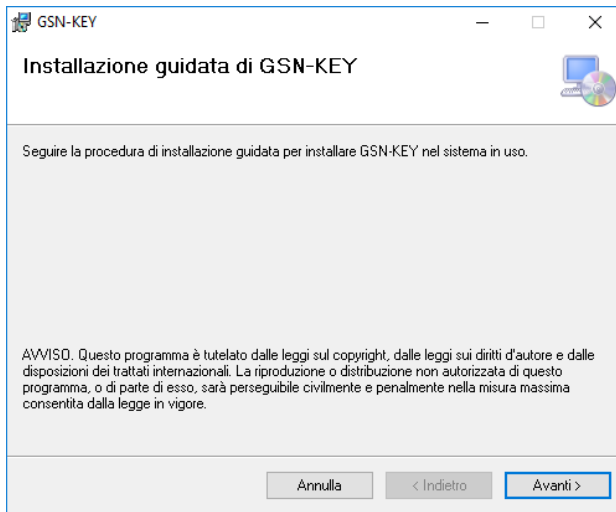
- Launch the file SETUP.EXE in the folder "GSN_KEY Installer IT".

If you do not have the following packages on your computer:

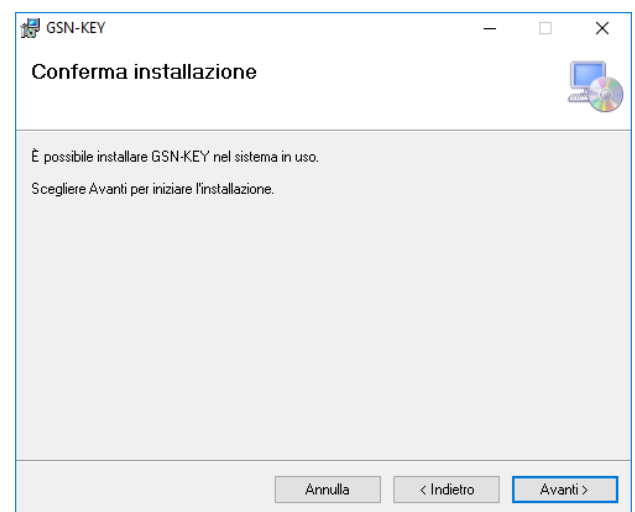
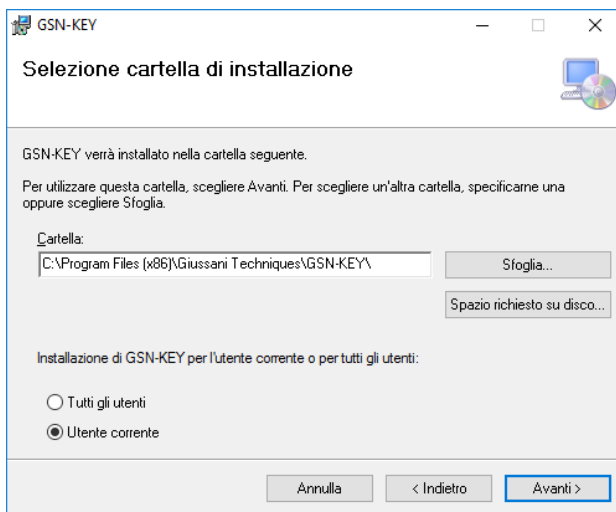
- .NET Framework 3.5 SP1
- SQL Compact 3.5 Service Pack 2
- Visual Studio 2010 Report Viewer

the installer will propose thee installation. Click on "Accept" to confirm the installation

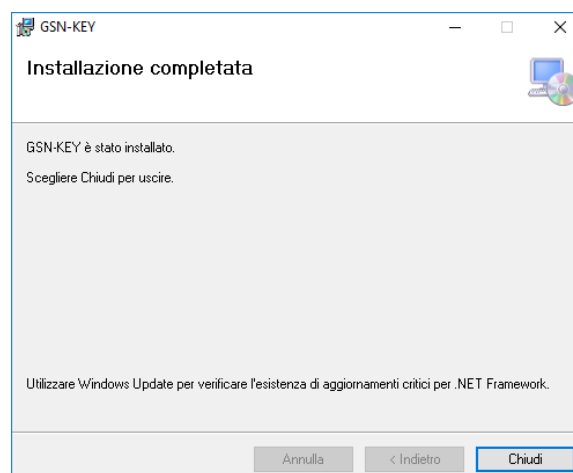
- Once the GSN-KEY installation wizard has started click on "NEXT"; then read carefully, select the acceptance of the terms of the contract and click on "NEXT".



- Change the location where the software will be installed if necessary and select the installation that can be used by all PC users. Click on "NEXT" and again on "NEXT" in the next window



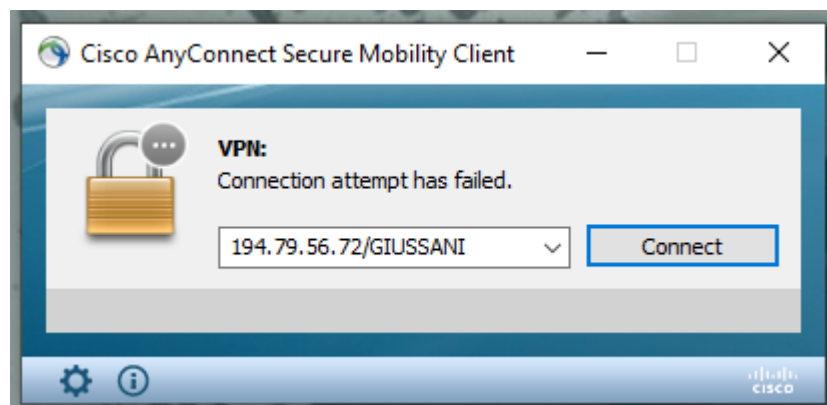
- Wait for the installation to be completed, which will take a maximum of 1 minute, and click on the CLOSE



- The software is now installed and ready to use. On the desktop of the PC there is an icon called GSN_KEY (shortcut to the program executable file), which is required to launch the program.
- Delete the installation files copied to a local folder as described in the first step of this procedure.

3. PHASE 3 – PROGRAM INSTALLATION FOR VPN CONNECTION ON LOCAL PC: BY THE CUSTOMER

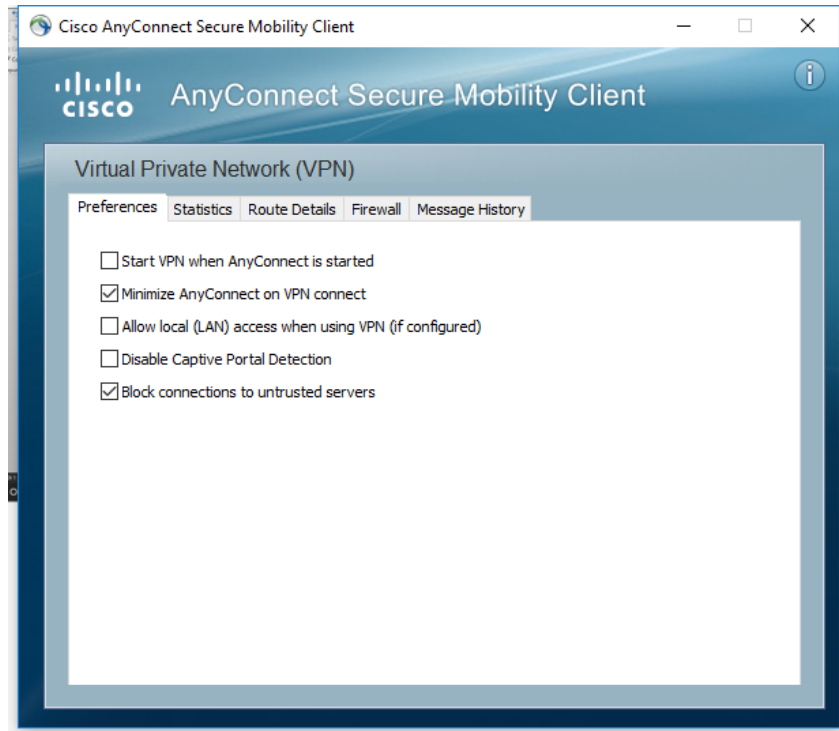
- a) Install the VPN management program supplied with the software in the CLOUD SERVICE folder by launching the file:
anyconnect-win-4.5.03040-core-vpn-predeploy-k9.msi
- b) Once installation is complete, launch the program Cisco AnyConnect Secure Mobility Client
- c) Enter in the address window as in the following image and click on "Connect"



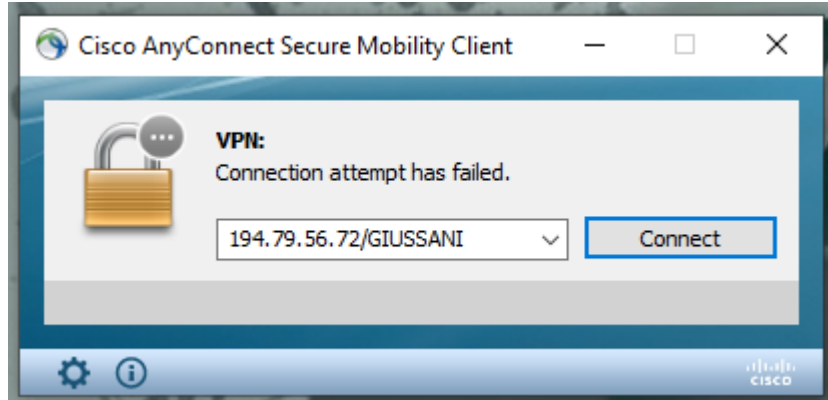
- d) In the event of problems with permissions, click "Change Setting"



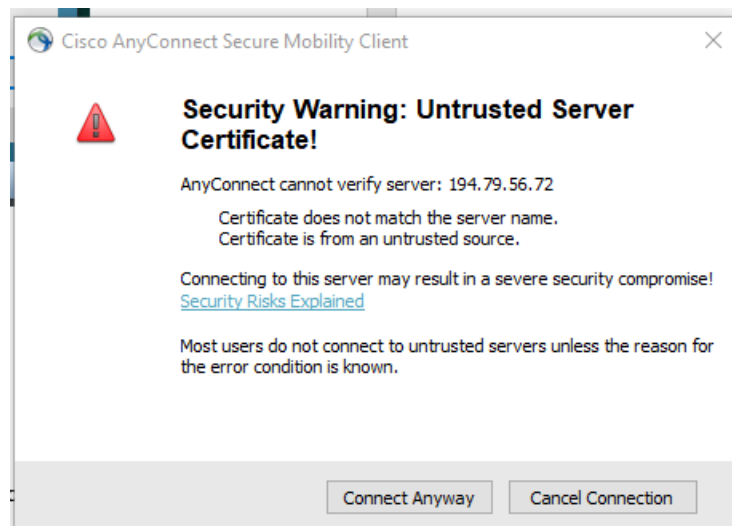
e) Remove flags from the last line of the menu "Block connections to untrusted servers"



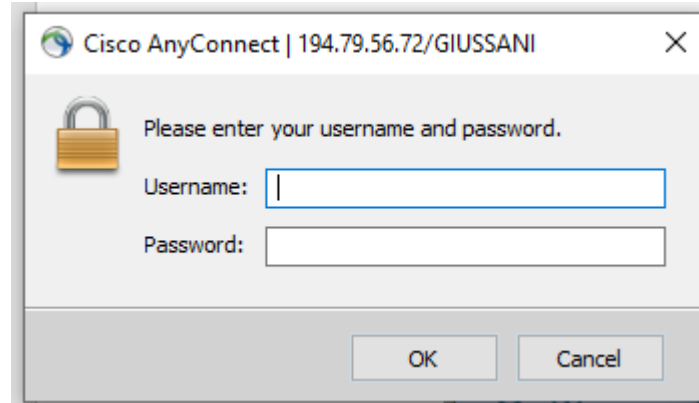
f) Click again on "Connect"



g) Select "Connect Anyway"



- h) Enter the data provided by Giussani Techniques in the "USERNAME" and "PASSWORD" windows



4. FASE 4 – FILE CONFIG MODIFICATON: BY THE CUSTOMER

- a) Copy the config file GSN_KEY.conf.exe in the CLOUD SERVICE folder to the desktop
- b) Open the file with NOTEPAD program to edit it
- c) Replace the fields indicated below with the data received from Giussani Techniques

In the row RestServerPort

- `value="GIUSSANI"` replace GIUSSANI with the port number provided

In the row DBConnectionString

- `Password=GIUSSANI` replace GIUSSANI with the provided database PASSWORD
- `User ID=GIUSSANI` replace GIUSSANI with USER ID of the database provided
- `Initial Catalog=GIUSSANI` replace GIUSSANI with the CATALOG NAME provided

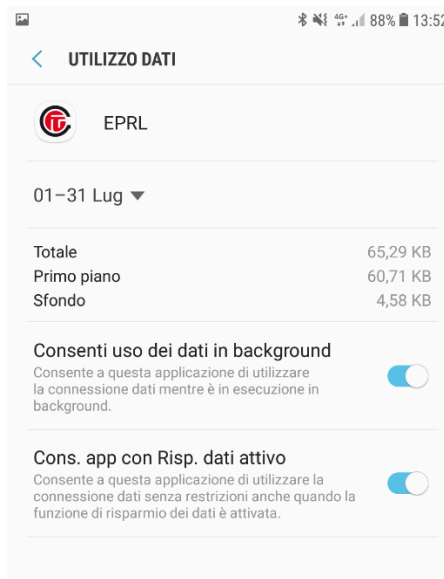
- d) Save the file and then copy the file to the GSN-KEY program folder (C:\Program Files (x86)\Giussani Techniques\GSN-KEY)

5. FASE 5 – PROGRAM LAUNCH, UPDATE and PORT SETTING

- a) Open the GSN-KEY program and if required, update to the latest version available
- b) In the "SETTINGS" menu:
 - enable "Bluetooth key support"
 - select the local IP of the server
 - enter the port number provided in the "REST server port" field (see also point 4.C)

CONFIGURATION AND ACTIVATION OF MOBILE DEVICES

- **Attention: The system requires a mobile device with Bluetooth 4.1 or higher**
- Install the E-PRL app available on the Play Store and Apple Store on your mobile device
- Ensure that the APP is not among the APPs that the device will suspend if not in use. Normally this option can be found under Settings/Maintenance Device/Battery
- Ensure that the APP has permission to use the data in the background and has permission to use the data without restrictions. These options are usually verifiable and can be enabled in Settings/Applications/E-PRL/Data usage.



- The first time the APP is launched, you will be asked to configure the communication settings (Settings). Enter the following string:

194.79.56.74:XXXX

XXXX must be replaced by the port number provided

- Once you have completed the "Settings" window, click on "OK".
- The window where you have to enter the "**Passkey**" will appear. The "Passkey" is the password that will allow you to register and activate your mobile device.
- Ask your system administrator and enter the Passkey generated during the encoding and assignment of the mobile device (see "Entering your smartphone details" on page 30).

Warning: The Passkey on the GSN-KEY expires every 5 minutes. If the mobile device is not paired within the time indicated above, the Passkey must be renewed using the dedicated button in the "SMARTPHONE" menu; consequently, if the device is activated at a time other than the encryption and assignment time, before notifying the user of the Passkey, select the device and renew the Passkey using the dedicated button.

- After inserting the correct Passkey and clicking on "OK" the APP will be launched and you will be asked for authorization to access the position of the device: answer "CONSENT".

- If the Bluetooth service is not already active, you will be prompted to start the service: answer "YES".
- The APP will now be launched and connecting with the server will indicate on the mobile device the keys associated with it.

IMPORTANT: Make sure your mobile device cannot suspend the EPRL application for battery life. (Settings/Maintenance Device/Battery)

CHANGE DEVICE

If it is necessary to change a device (failure, loss or change of device) without having to change the keys associated with it, proceed as follows:

- Install the E-PRL application available on the Play Store and Apple Store on your new device
- The first time the APP is launched, you will be asked to configure the communication settings (Settings). Enter the following string:

194.79.56.74:XXXX

XXXX must be replaced by the port number provided

- Once you have completed the "Settings" window, click on "OK".
- The window where you have to enter the "Passkey" will appear. The "Passkey" is the password that will allow you to register and activate your mobile device.
- Ask your system administrator for the Passkey in order to change the previously assigned and registered device.
- The system administrator simply selects the device to replace, renews the Passkey and communicates it to the user.

Warning: once the Passkey is inserted and the new device is registered/activated, the previously registered device will stop working with the GSN-KEY system.

- After inserting the correct Passkey and clicking on "OK" the APP will be launched and you will be asked for authorization to access the position of the device: answer "CONSENT".
- If the Bluetooth service is not already active, you will be prompted to start the service: answer "YES".
- The APP will now be launched and connecting with the server will indicate on the mobile device the keys associated with it.

IMPORTANT: Make sure your mobile device cannot suspend the EPRL application for battery life. (Settings/Maintenance Device/Battery)

BACKUP DATABASE

- Every 48 hours the Cloud Service performs database backups. In case of need, the customer can request, via e-mail, to restore the database as per the situation at 2:00 pm two days before.

DECLARATION OF CONFORMITY

Giussani Techniques S.p.A. Declares that the E-PRL system meets all the requirements applicable to the type of product and required by telecommunications regulations in accordance with Directive 2014 / 30UE and 2011/65 / EC, using the rules published in the Official Journal of the European Community.



The CE Certificate of Conformity can be downloaded from www.giussanilocks.itCertificato